



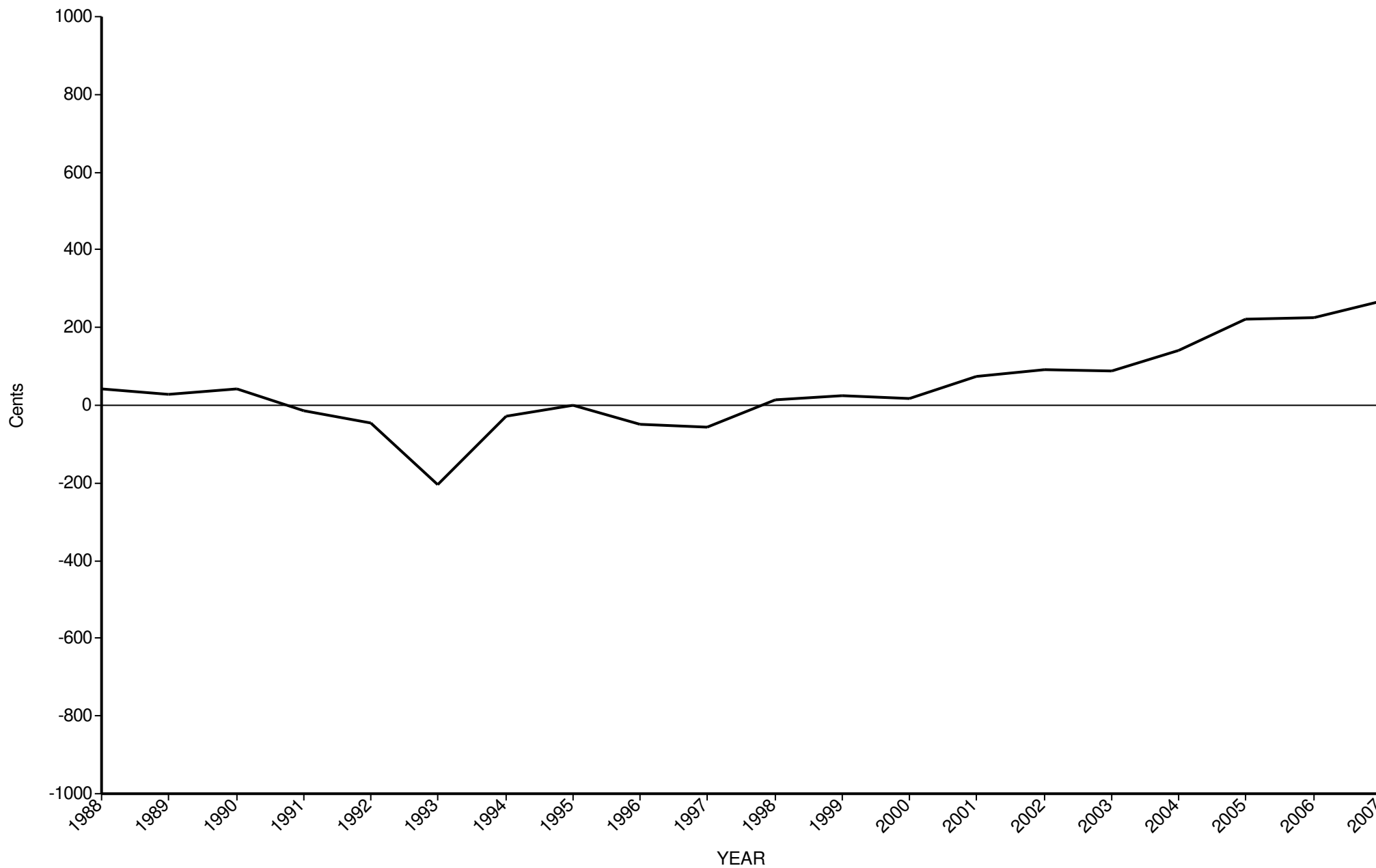
SIL Genetic Trends Graphs

for Flock 2749

GE Analysis #16606 27/2/2008

Analysis Flocks: 2747,2748,2749

Mt Linton Maternal





SIL Genetic Trends Graphs

for Flock 2749

GE Analysis #16606 27/2/2008

Analysis Flocks: 2747,2748,2749





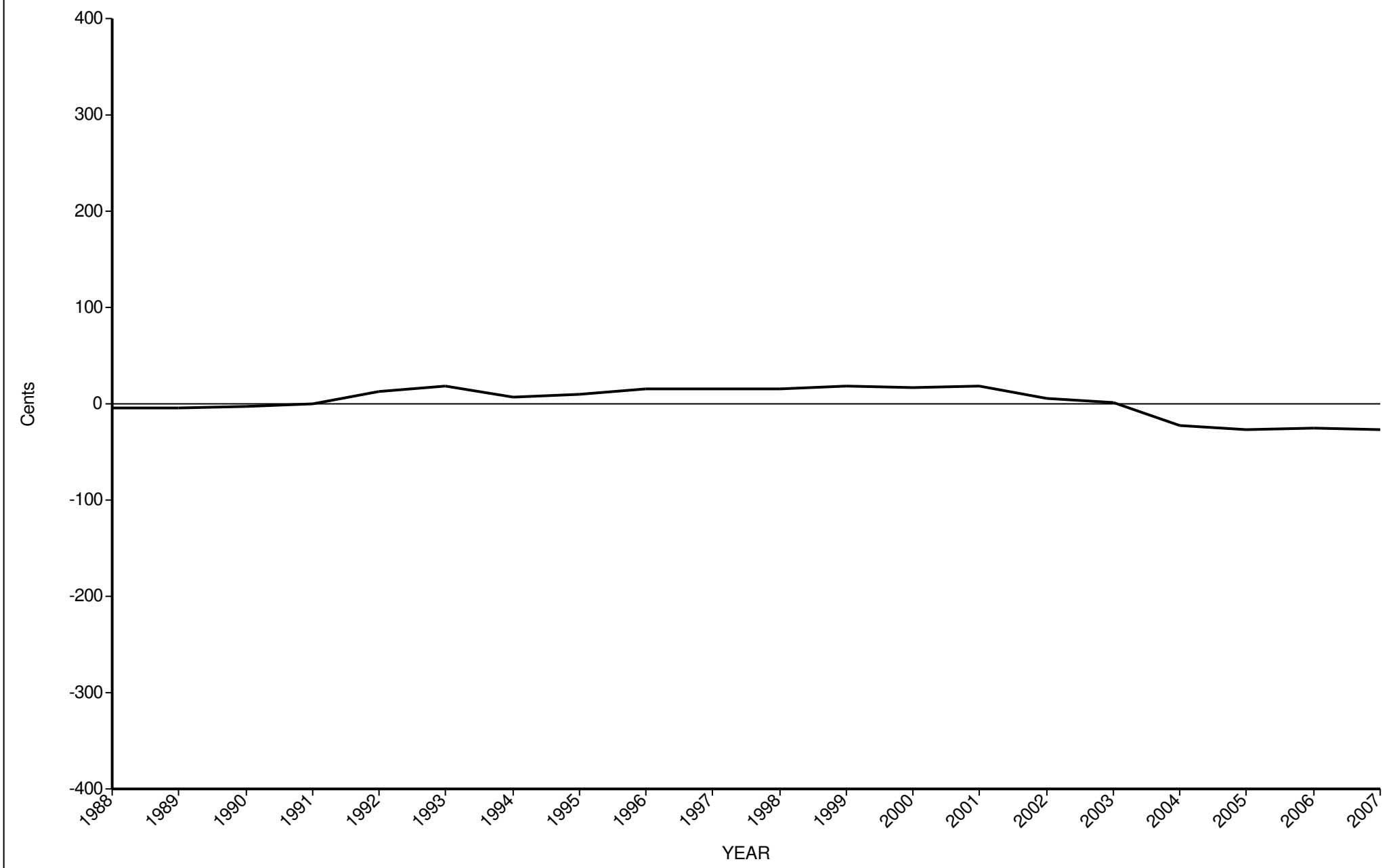
SIL Genetic Trends Graphs

for Flock 2749

GE Analysis #16606 27/2/2008

Analysis Flocks: 2747,2748,2749

SIL Terminal Sire WormFEC





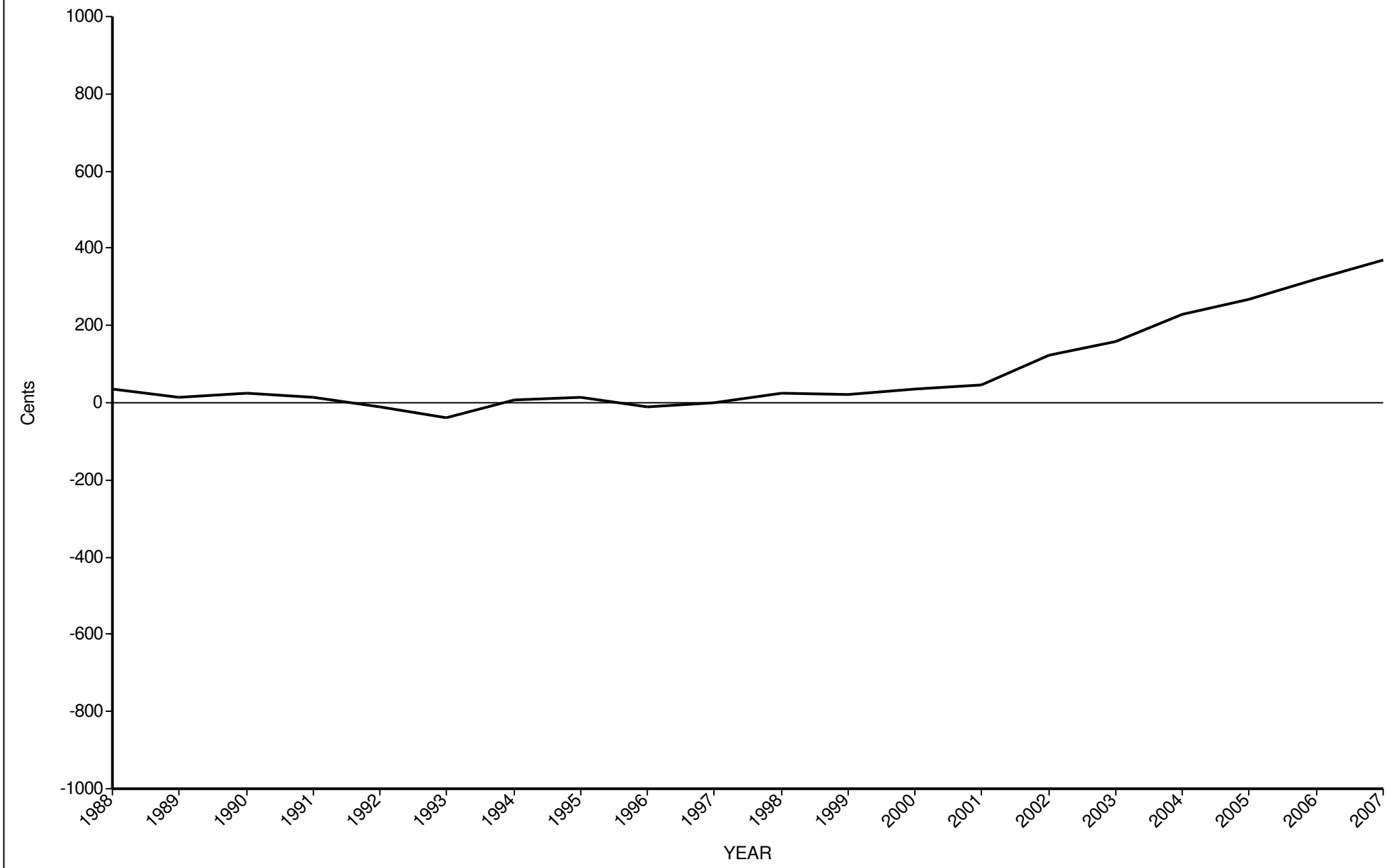
SIL Genetic Trends Graphs

for Flock 2749

GE Analysis #16606 27/2/2008

Analysis Flocks: 2747,2748,2749

SIL Terminal Sire Innervalue





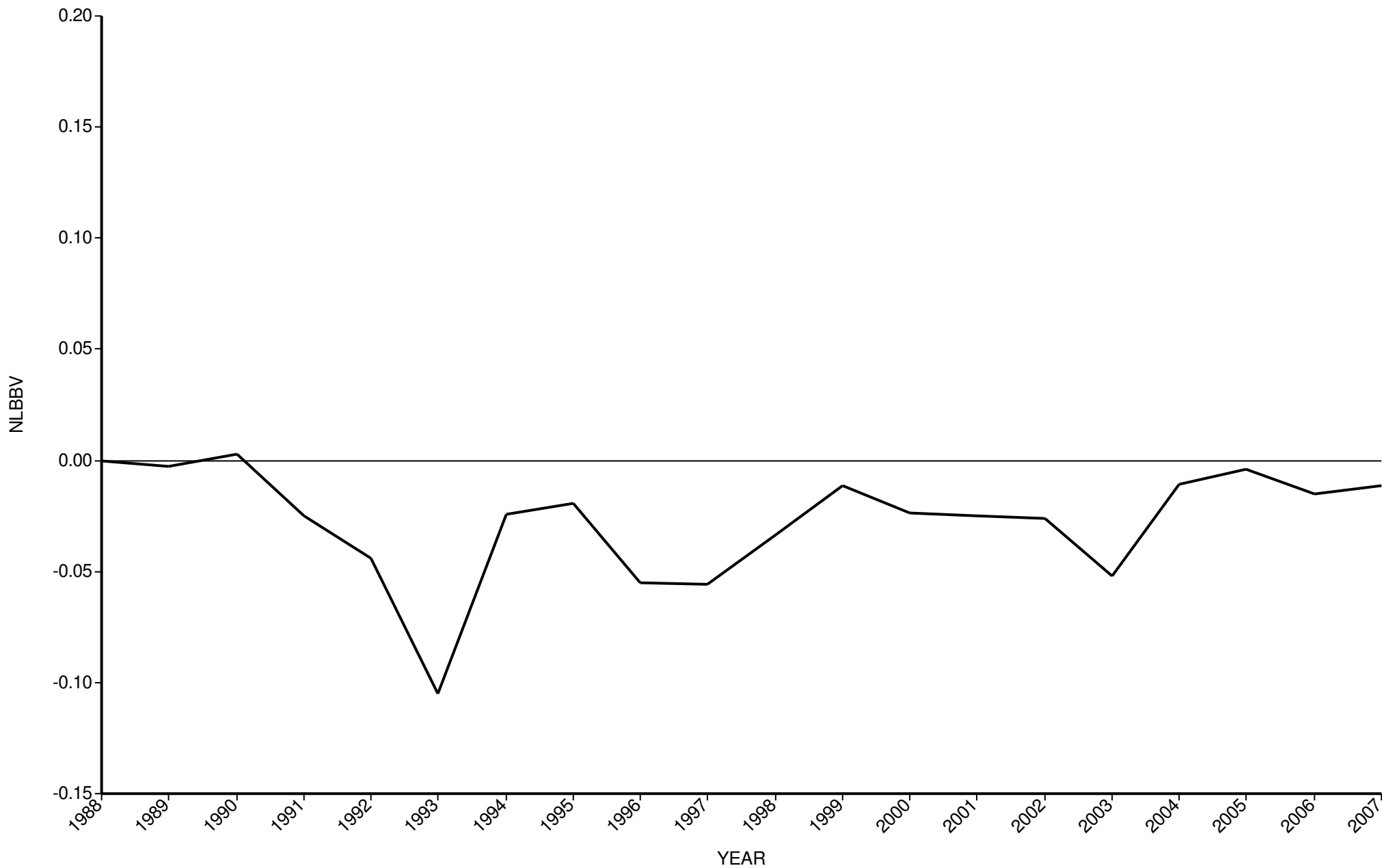
SIL Genetic Trends Graphs

for Flock 2749

GE Analysis #16606 27/2/2008

Analysis Flocks: 2747,2748,2749

Number of lambs born BV





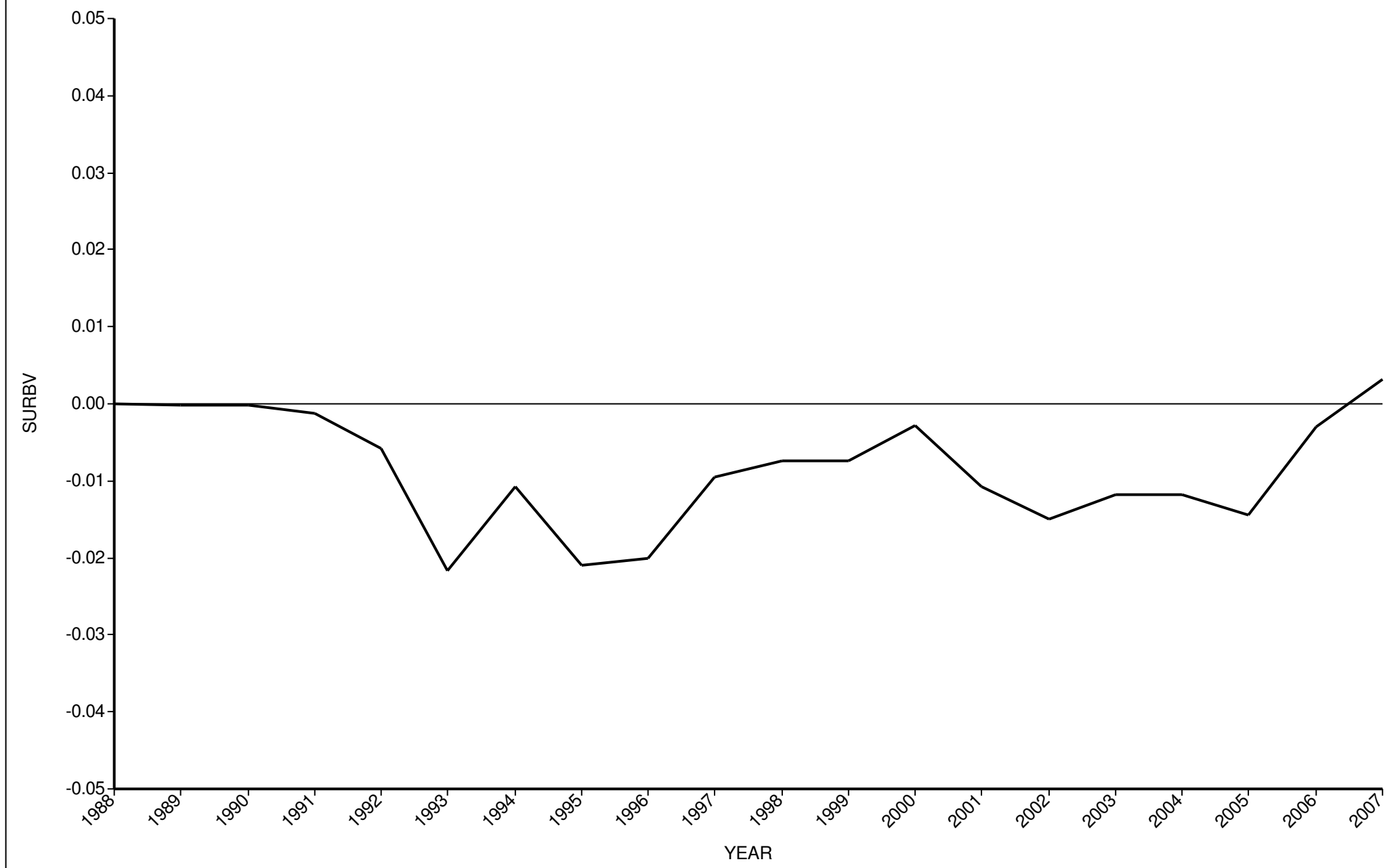
SIL Genetic Trends Graphs

for Flock 2749

GE Analysis #16606 27/2/2008

Analysis Flocks: 2747,2748,2749

Lamb survival BV





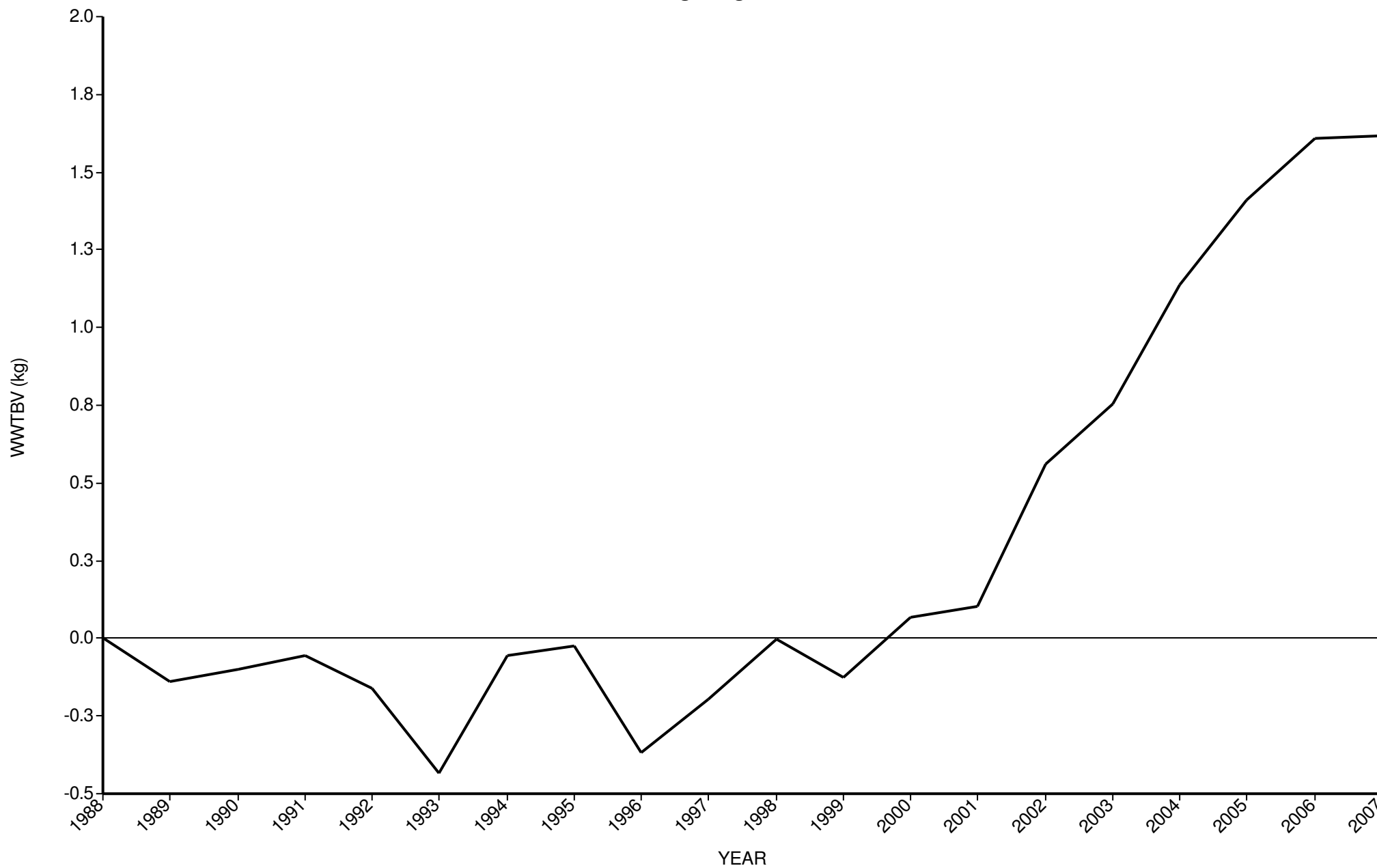
SIL Genetic Trends Graphs

for Flock 2749

GE Analysis #16606 27/2/2008

Analysis Flocks: 2747,2748,2749

Weaning weight BV





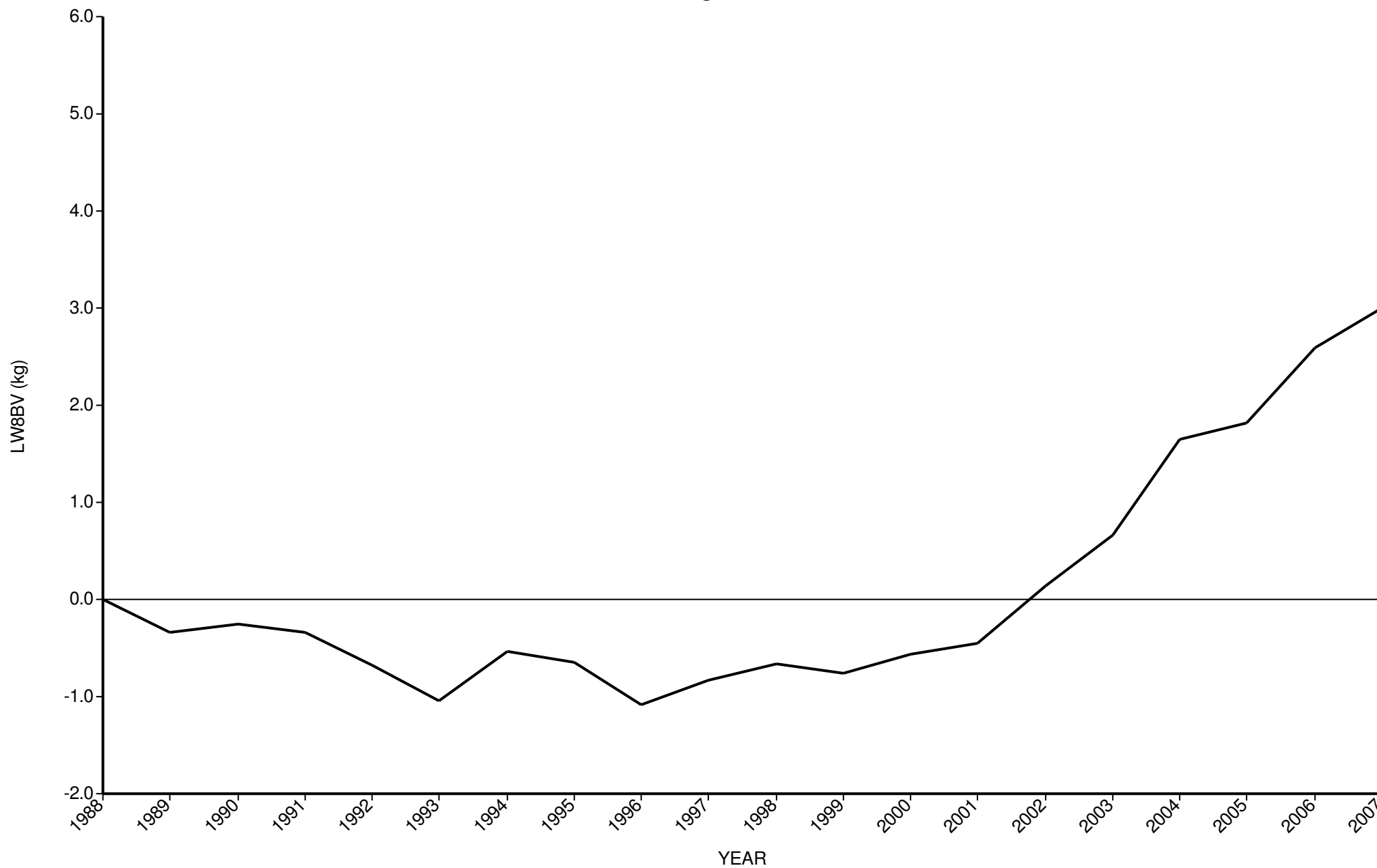
SIL Genetic Trends Graphs

for Flock 2749

GE Analysis #16606 27/2/2008

Analysis Flocks: 2747,2748,2749

Live weight 8 BV





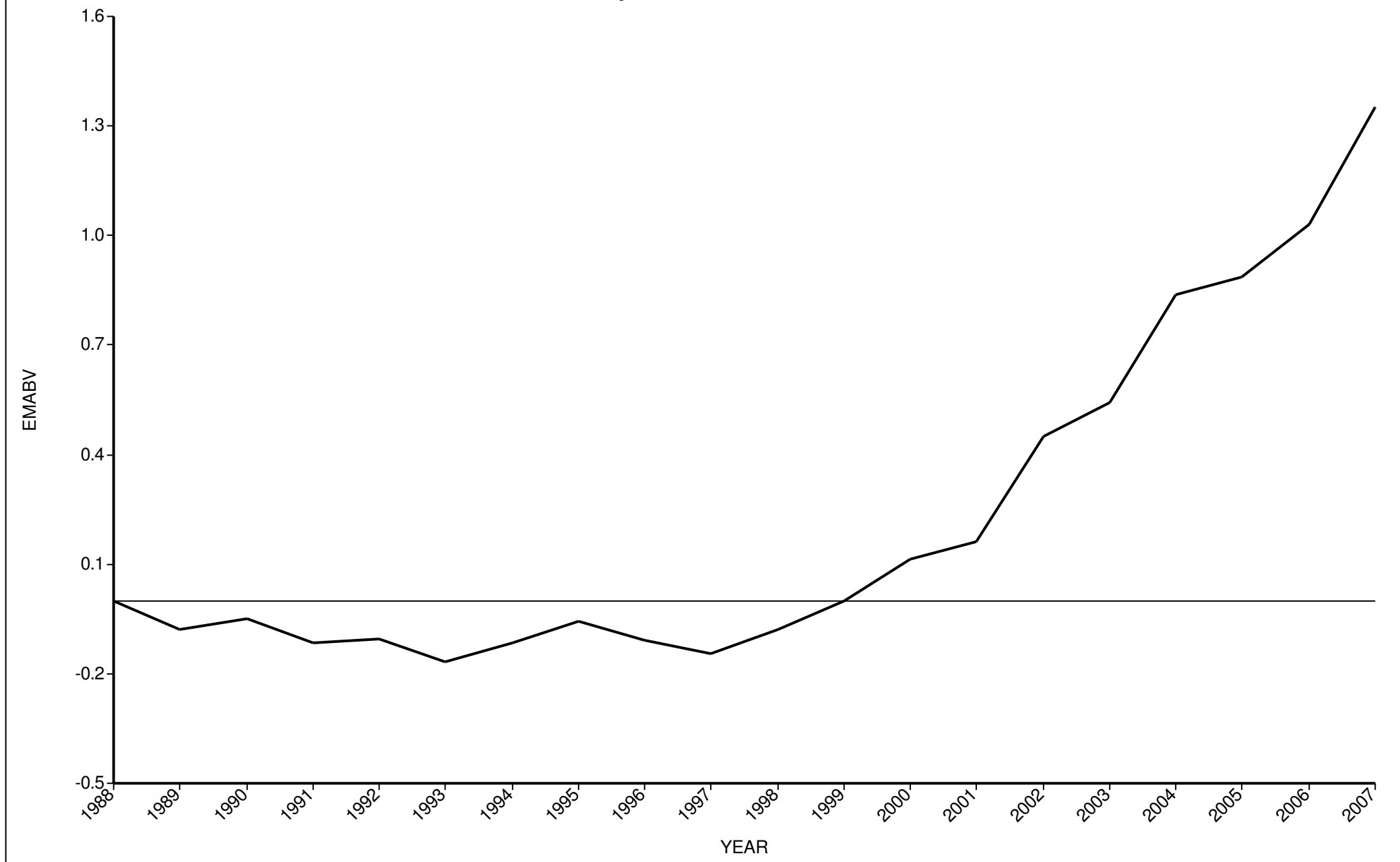
SIL Genetic Trends Graphs

for Flock 2749

GE Analysis #16606 27/2/2008

Analysis Flocks: 2747,2748,2749

Eye muscle area BV





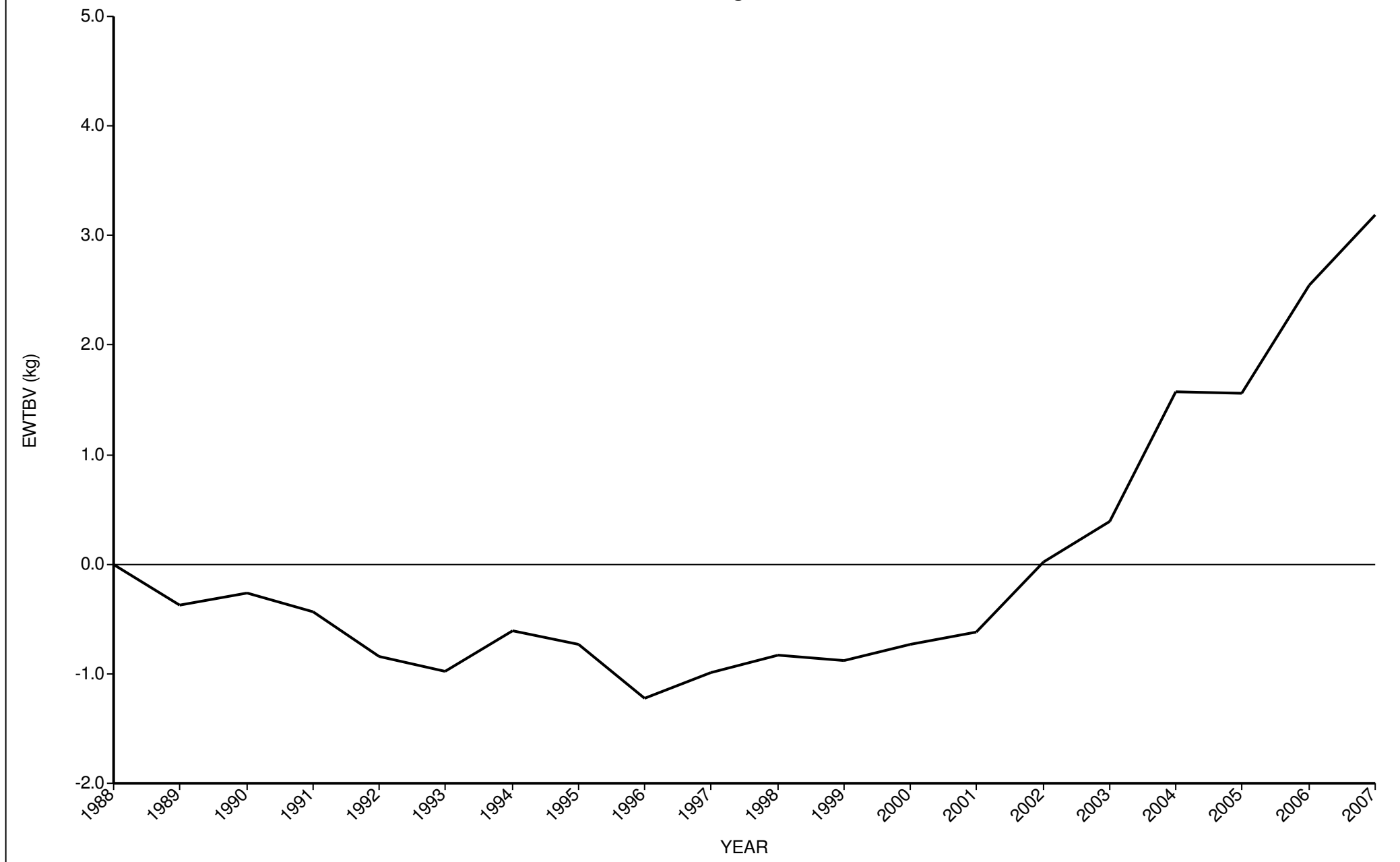
SIL Genetic Trends Graphs

for Flock 2749

GE Analysis #16606 27/2/2008

Analysis Flocks: 2747,2748,2749

Ewe live weight BV





SIL Genetic Trends Graphs

for Flock 2749

GE Analysis #16606 27/2/2008

Analysis Flocks: 2747,2748,2749

SIL Terminal Sire Survival

